

PROJECT PROGRESS REPORT

New Academic Support and Office Building 2100

LAS POSITAS COLLEGE
January 22, 2020

Project Team:
Architect: LPAS
Project / Construction Manager: Critical Solutions, Inc.
Contractor: TBD

Project Description:
The new Academic Support and Office building will be built in the location of existing buildings 2100 & 2200. The project will consist of the following elements and programs: English Center incorporating classrooms, computer lab, tutoring and study areas. Math Center incorporating classrooms, labs and the Math X program. Computer Sciences Center including computer labs, networking, maker space and open labs with the expanded of library functions including reference desk, study areas, computer lab, expanded staff offices and library operational support spaces. Faculty Offices Dean's Suite and Student gathering, and support spaces will also be in the building.

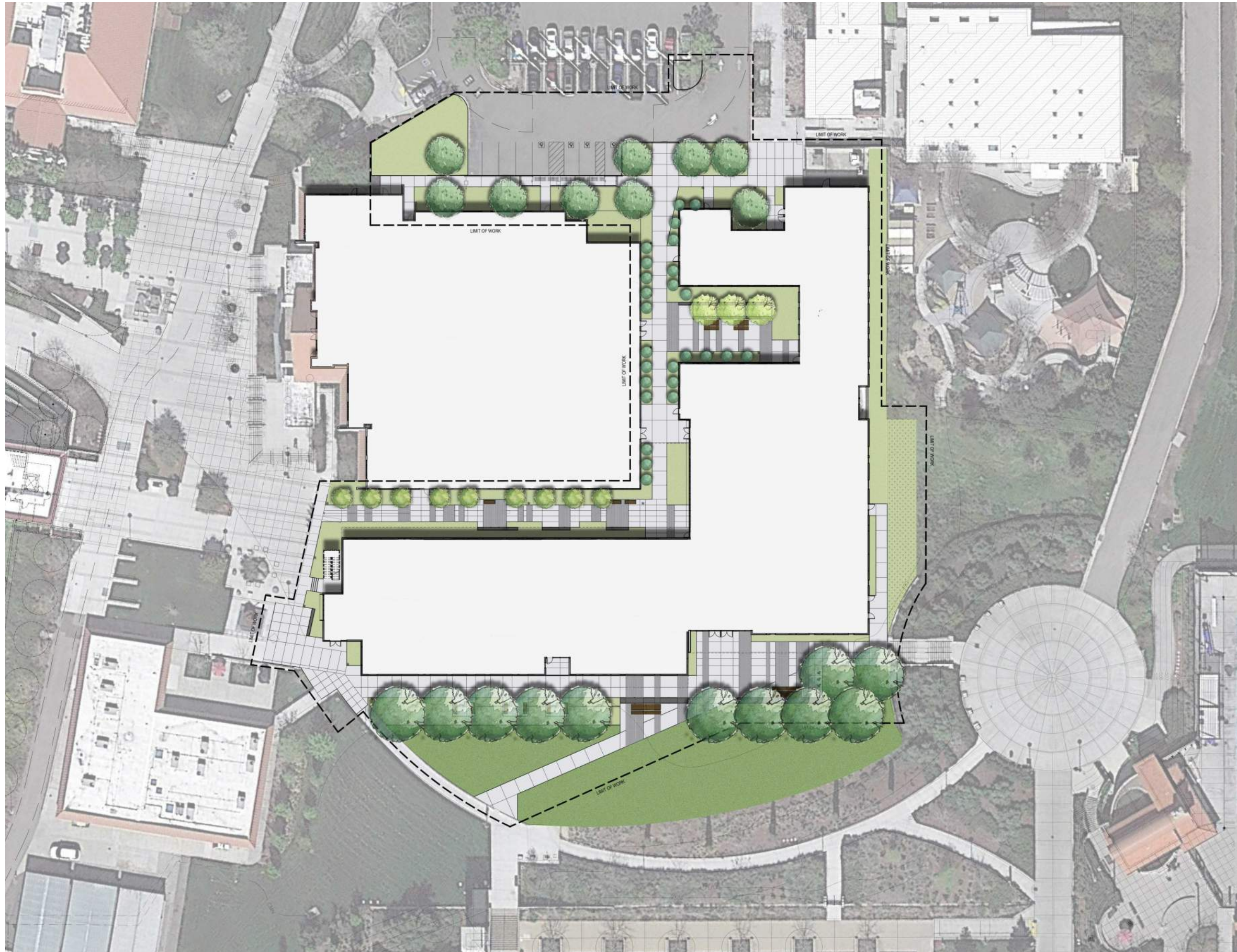
Project Update:
Design Development deliverables were provided in December 2019. Proposed finishes were presented to the College. Updates will be presented to the Committee for approval. The new construction estimate has been submitted. All deliverables are being evaluated for accuracy and completeness in preparation for the construction document design phase to commence.

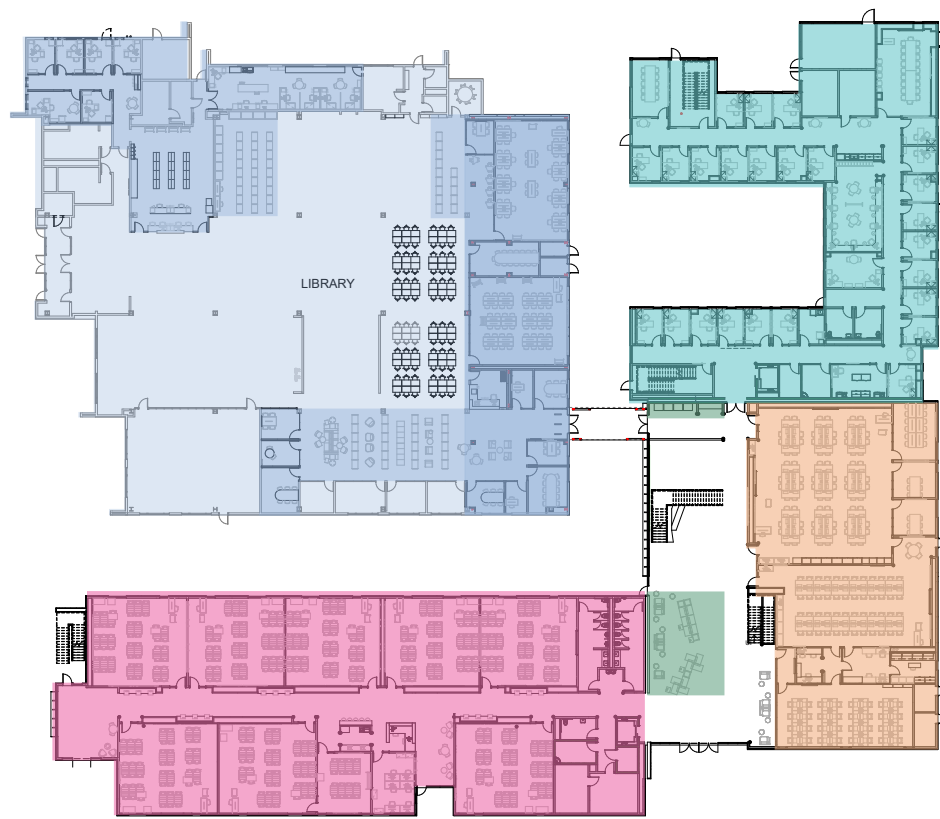
Programming: Complete
Schematic Design: Complete
Design Development: Complete
Construction Documents: 6/2020
DSA Permit Approval: TBD
Construction Start: TBD
Occupancy: TBD

Square Footage:
Faculty: +/- 25,278sf
Classrooms/Math/Tutoring/Computer Studies: +/- 54,872sf
Library Addition: +/- 5,000sf

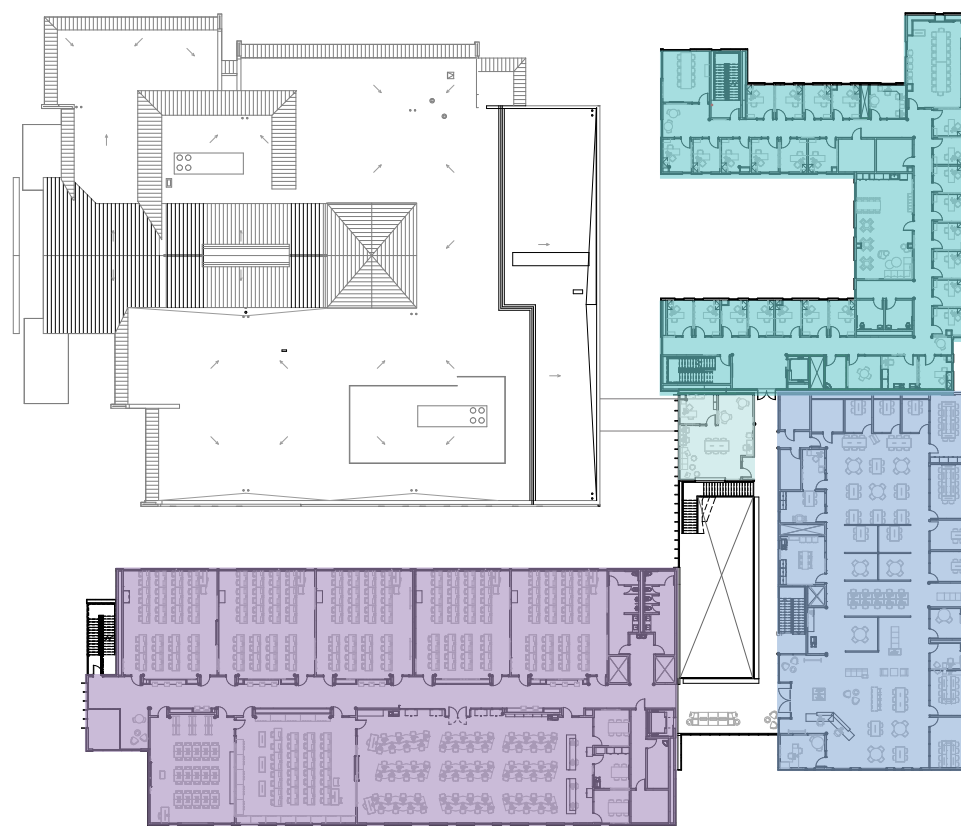




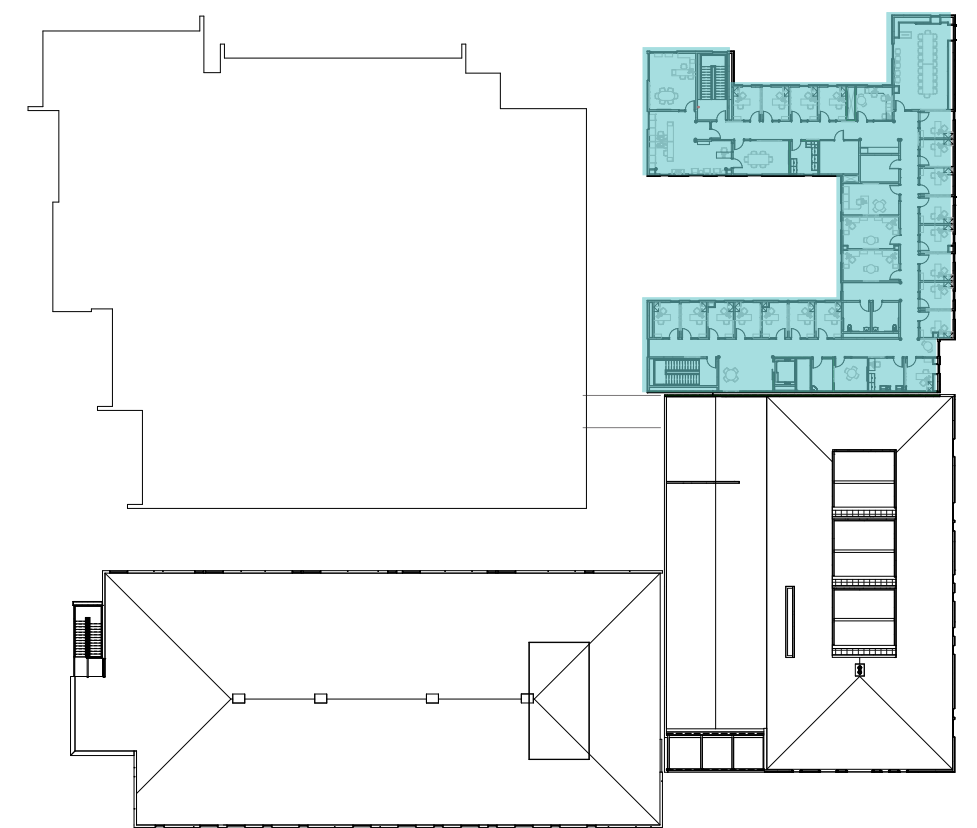




First Floor Plan



Second Floor Plan



Third Floor Plan

- Classrooms
 - Math / Proctoring
 - Faculty
 - Honors
- Computer Studies
 - Tutoring
 - Collaboration Space









