



KCCCD FUNCTIONAL MAPPING FOR DECISION-MAKING

Function	Service Provider(s)	Lead(s)	Title
Admissions, Records & Registration <i>Decentralized with coordination from District Office</i>	District Office Bakersfield College Cerro Coso Community College Porterville College	Greg Chamberlain Mildred Lovato Jill Board Steve Schultz	Vice Chancellor, Educational Services Vice President, Student Services Vice President, Student Services Vice President, Student Services
Athletics <i>Decentralized</i>	Bakersfield College Cerro Coso Community College Porterville College	Jan Stuebbe Jill Board Steve Schultz	Dean, Health, PE & Athletics Vice President, Student Services Vice President, Student Services
Auxiliary Services • Bookstore <i>Decentralized</i>	Bakersfield College Cerro Coso Community College Porterville College	Robert Day Gale Lebsack Gary Wallace	Dir., M & O/Aux. Services Director, Business Services Dir., M & O/Aux. Services
• Food Services <i>Decentralized</i>	Bakersfield College Cerro Coso Community College Porterville College	Ed Knudson Joann Handeland Gary Wallace	Vic President, Academic Affairs Director, Public Information Dir., M & O/Aux. Services
• Student Government <i>Decentralized</i>	Bakersfield College Cerro Coso Community College Porterville College	Mildred Lovato Jill Board Steve Schultz	Vice President, Student Services Vice President, Student Services Vice President, Student Services
Budget Development <i>Decentralized with coordination from District Office</i>	District Office Bakersfield College Cerro Coso Community College Porterville College	Tom Burke John Griffith Gale Lebsack Donna Berry	Chief Financial Officer Director, Business Services Director, Business Services Director, Business Services

Function	Service Provider(s)	Lead(s)	Title
Business Services			
<ul style="list-style-type: none"> Accounting <i>Centralized at District Office</i> 	District Office	Tom Burke	Chief Financial Officer
<ul style="list-style-type: none"> Purchasing <i>Decentralized with assistance from District Office</i> 	District Office Bakersfield College Cerro Coso Community College Porterville College	Tom Burke John Griffith Gale Lebsack Donna Berry	Chief Financial Officer Director, Business Services Director, Business Services Director, Business Services
Catalog/Schedule Development			
<i>Decentralized</i>	Bakersfield College Cerro Coso Community College Porterville College	Ed Knudson Jane Harmon Dale Norton	Vice President, Academic Affairs Vice President, Academic Affairs (Int.) Vice President, Academic Affairs (Int.)
Child Development Centers			
<i>Centralized at District Office in coordination with Colleges</i>	District Office Bakersfield College Cerro Coso Community College Porterville College	Nan Gomez-Heitzeberg Nan Gomez-Heitzeberg Nan Gomez-Heitzeberg Nan Gomez-Heitzeberg	Executive Director, Child Development Center Programs Executive Director, Child Development Center Programs Executive Director, Child Development Center Programs Executive Director, Child Development Center Programs
DSPS (Disabled Students Program & Services)			
<i>Decentralized</i>	Bakersfield College Cerro Coso Community College Porterville College	Angelica Gomez Jill Board Carol Wilkins	Director, DSPS Vice President, Student Services Director, Disability Resource Center
EOPS (Extended Opportunities Program & Services)			
<i>Decentralized</i>	Bakersfield College Cerro Coso Community College Porterville College	Mildred Lovato Jill Board Maria Roman	Vice President, Student Services Vice President, Student Services Director, EOPS

Function	Service Provider(s)	Lead(s)	Title
Facilities Planning and Construction <i>Centralized at District Office in coordination with Colleges</i>	District Office Bakersfield College Cerro Coso Community College Porterville College	Tom Burke Bob Day Joann Handeland Gary Wallace	Chief Financial Officer Director, Maint. & Opera/Aux. Serv. Director, Public Information Dir., Maint. & Opera./Aux. Services
Finance • Economic Analysis <i>Decentralized</i> • Cash Flow Analysis <i>Decentralized</i>			
Financial Aid <i>Decentralized at Colleges with support at District Office</i>	District Office Bakersfield College Cerro Coso Community College Porterville College	Greg Chamberlain Mildred Lovato Jill Board Steve Schultz	Vice Chancellor, Educational Services Vice President, Student Services Vice President, Student Services Vice President, Student Services
Foundation <i>Decentralized</i>	Bakersfield College Cerro Coso Community College Porterville College	Sheryl Barbich Joann Handeland Virginia Gurrula	Interim Executive Director, Foundation Director, Public Information Executive Director (Interim)
Grant Development <i>Decentralized with support from the District Office</i>	District Office Bakersfield College Cerro Coso Community College Porterville College	Greg Chamberlain Ed Knudson Jane Harmon/Jill Board Dale Norton	Vice Chancellor, Educational Services Vice President, Academic Affairs Vice Pres, Aca. Affairs (Int.)/Stu. Serv. Vice President, Academic Affairs (Int.)
Graphic Design/Duplicating <i>Decentralized</i>	Bakersfield College Cerro Coso Community College Porterville College	Debra Moberg Joann Handeland Tom Bethurum Randy Morgan	Publications Coordinator Director, Public Information Publications Coordinator Graphic Designer/Web Site Coord.

Function	Service Provider(s)	Lead(s)	Title
Human Resources and Payroll <i>Centralized at District Office in coordination with Colleges</i>	District Office Bakersfield College Cerro Coso Community College Porterville College	Vic Collins Vacant Vacant Vacant	Vice Chancellor, Human Res. (Int.)
<ul style="list-style-type: none"> • Prioritizing, allocation and placement of staff at appropriate location <i>Centralized function initiated by Colleges and supported by District Office</i> 	District Office Bakersfield College Cerro Coso Community College Porterville College	Vic Collins Vacant Vacant Vacant	Vice Chancellor, Human Res. (Int.)
<ul style="list-style-type: none"> • Collective Bargaining <i>Centralized</i> 	District Office Bakersfield College Cerro Coso Community College Porterville College	Vic Collins Vacant Vacant Vacant	Vice Chancellor, Human Res. (Int.)
<ul style="list-style-type: none"> • Compensation <i>Centralized</i> 	District Office Bakersfield College Cerro Coso Community College Porterville College	Vic Collins Vacant Vacant Vacant	Vice Chancellor, Human Res. (Int.)
Information Technology			
<ul style="list-style-type: none"> • IT Governance <i>Centralized at District Office in coordination with the Colleges</i> 	District Office Bakersfield College Cerro Coso Community College Porterville College	David Palinsky Bonnie Suderman Vacant Donna Berry	Director, Information Technology Dean, Learning Resources and IT Director, Business Services
<ul style="list-style-type: none"> • Technology Development and Planning <i>Decentralized with coordination with the District</i> 	District Office Bakersfield College Cerro Coso Community College Porterville College	David Palinsky Bonnie Suderman Vacant Donna Berry	Director, Information Technology Dean, Learning Resources and IT Director, Business Services

Function	Service Provider(s)	Lead(s)	Title
Information Technology (continued) <ul style="list-style-type: none"> Technology Services and Applications <i>Centralized at District Office with input from the Colleges</i> - Banner and Related Systems - Application Development - Database Administration 	District Office Bakersfield College Cerro Coso Community College Porterville College District Office	David Palinsky Bonnie Suderman Vacant Donna Berry David Palinsky Marc Beam	Director, Information Technology Dean, Learning Resources and IT Director, Business Services Director, Information Technology Director, Institutional Research
<ul style="list-style-type: none"> Information Access and Reporting <i>Centralized at District Office with input from the Colleges</i> 	District Office		
<ul style="list-style-type: none"> Website Services <i>Decentralized with support from District Office</i> 	District Office Bakersfield College Cerro Coso Community College Porterville College	David Palinsky Jim McGee Cori Ratliff Donna Berry	Director, Information Technology Director, Information Services Webmaster Director, Business Services
<ul style="list-style-type: none"> Online Instruction/Services <i>Decentralized with support from District Office</i> 	District Office Bakersfield College Cerro Coso Community College Porterville College	Greg Chamberlain Bonnie Suderman Jane Harmon/Jill Board Antonia Ecuang	Vice Chancellor, Educational Services Dean, Learning Resources and IT Int. VP, Affairs/Vice Pres., Stu. Serv. Dean, Academic Affairs
<ul style="list-style-type: none"> Internet/Email Services <i>Centralized with input from the colleges</i> 	District Office	Eddie Alvarado	Asst. Director, Information Technology
<ul style="list-style-type: none"> Server Management <i>Decentralized with coordination from District Office</i> 	District Office Bakersfield College Cerro Coso Community College Porterville College	Eddie Alvarado Jim McGee Vacant Donna Berry	Asst. Director, Information Technology Director, Information Services Director, Business Services
<ul style="list-style-type: none"> Backup and Recovery <i>Decentralized</i> 	District Office Bakersfield College Cerro Coso Community College Porterville College	Eddie Alvarado Jim McGee Vacant Donna Berry	Asst. Director, Information Technology Director, Information Services Director, Business Services

Function	Service Provider(s)	Lead(s)	Title
<i>Information Technology (continued)</i>			
<ul style="list-style-type: none"> • Video Conferencing/Interactive TV <i>Centralized with input from the Colleges</i> 	District Office Bakersfield College Cerro Coso Community College Porterville College District Office	Eddie Alvarado Bonnie Suderman Vacant Rosemary Viotto Eddie Alvarado	Asst. Director, Information Technology Dean, Learning Resources and IT Media Tech/Library Tech II Asst. Director, Information Technology
<ul style="list-style-type: none"> • Telecommunications <i>Centralized</i> 	District Office Bakersfield College Cerro Coso Community College Porterville College	Eddie Alvarado Jim McGee Vacant Donna Berry	Asst. Director, Information Technology Director, Information Services Director, Business Services
<ul style="list-style-type: none"> • Network Management <i>Centralized with input from the Colleges</i> 	District Office Bakersfield College Cerro Coso Community College Porterville College	Eddie Alvarado Jim McGee Vacant Donna Berry	Asst. Director, Information Technology Director, Information Services Director, Business Services
<ul style="list-style-type: none"> • Help Desk Services <i>Transitioning to Centralization with input from the Colleges</i> 	District Office Bakersfield College Cerro Coso Community College Porterville College	Eddie Alvarado Jim McGee Vacant Donna Berry	Asst. Director, Information Technology Director, Information Services Director, Business Services
<ul style="list-style-type: none"> • Training <i>Decentralized with coordination from the District Office</i> 	District Office Bakersfield College Cerro Coso Community College Porterville College	David Palinsky Bonnie Suderman Vacant Donna Berry	Director, Information Technology Dean, Learning Resources and IT Director, Business Services
<ul style="list-style-type: none"> • Desktop Support <i>Decentralized</i> 	District Office Bakersfield College Cerro Coso Community College Porterville College	Eddie Alvarado Jim McGee Vacant Donna Berry	Asst. Director, Information Technology Director, Information Services Director, Business Services
<ul style="list-style-type: none"> • Classroom and Computer Lab Support <i>Decentralized</i> 	Bakersfield College Cerro Coso Community College Porterville College	Jim McGee Vacant Donna Berry	Director, Information Services Director, Information Services Director, Business Services

Function	Service Provider(s)	Lead(s)	Title
<i>Instruction</i> <i>Decentralized with coordination from District Office</i> • Curriculum Development	District Office Bakersfield College Cerro Coso Community College Porterville College	Greg Chamberlain Ed Knudson Susan McQuerrey Jane Harmon Dennis VanderWerff Dale Norton Ron Glahn	Vice Chancellor, Educational Services Vice President, Academic Affairs Curriculum Co-chair Vice President, Academic Affairs (Int.) Curriculum Co-chair Vice President, Academic Affairs (Int.) Curriculum Co-chair
<i>Library/Learning Resources</i> <i>Decentralized with support from District Office</i> • Library • Tutoring • Media Services/Audio Visual	District Office Bakersfield College Cerro Coso Community College Porterville College District Office Bakersfield College Cerro Coso Community College Porterville College District Office Bakersfield College Cerro Coso Community College Porterville College	Greg Chamberlain Bonnie Suderman Jane Harmon Antonia Ecuang Greg Chamberlain Patti Ross Jane Harmon Antonia Ecuang Eddie Alvarado Bonnie Suderman John Daly Rosemary Viotto	Vice Chancellor, Educational Services Dean, Learning Resources and IT Vice President, Academic Affairs (Int.) Dean, Academic Affairs Vice Chancellor, Educational Services Dean, Student Learning Vice President, Academic Affairs (Int.) Dean, Academic Affairs Asst. Director, Information Technology Dean, Learning Resources and IT Director, Maintenance & Operations Media Tech./Library Tech. II
<i>Maintenance/Operations</i> <i>Decentralized with support from District Office</i>	District Office Bakersfield College Cerro Coso Community College Porterville College	Tom Burke Bob Day John Daly Gary Wallace	Chief Financial Officer Director, Maintenance & Operations Director, Maintenance & Operations Director, Maint & Operations/Aux. Ser.
<i>Marketing</i> <i>Decentralized</i>	Bakersfield College Cerro Coso Community College Porterville College	Amber Chiang Joann Handeland Monte Moore	Director, Marketing & Public Relations Director, Public Information Public Information Office

Function	Service Provider(s)	Lead(s)	Title
Program Development and Review			
<ul style="list-style-type: none"> Program Development <i>Decentralized with approval from District Office</i> 	District Office Bakersfield College Cerro Coso Community College Porterville College	Greg Chamberlain E. Knudson/M. Lovato Jane Harmon/Jill Board Dale Norton	Vice Chancellor, Educational Services VP, Aca. Affairs/VP, Stu. Services Vice Pres., Aca. Affairs/VP, Stu. Serv. Vice President, Academic Affairs (Int.)
<ul style="list-style-type: none"> Program Review <i>Decentralized</i> 	Bakersfield College Cerro Coso Community College Porterville College	E. Knudson/M. Lovato Jane Harmon/Jill Board Dale Norton	VP, Aca. Affairs/VP, Stu. Services Vice Pres., Aca. Affairs/VP, Stu. Serv. Vice President, Academic Affairs (Int.)
Research			
<i>Decentralized with coordination with Colleges</i>	District Office Bakersfield College Cerro Coso Community College Porterville College	Marc Beam Ann Morgan Vacant Michael Carley	Director, Institutional Research Director of IR and Planning Institutional Researcher
Risk Management			
<ul style="list-style-type: none"> General Liability <i>Centralized</i> Workers' Compensation, Health and Welfare <i>Centralized</i> 	District Office District Office	Tom Burke Vic Collins	Chief Financial Officer Vice Chancellor, Human Res. (Int.)
Student Learning Outcomes			
<i>Decentralized</i>	Bakersfield College Cerro Coso Community College Porterville College	Ed Knudson Cindy Hubble James Fay Suzanne Ama Dale Norton Sara French-Unser	Vice President, Academic Affairs Assessment Coordinator Vice President, Academic Affairs Student Learning Outcomes Coord. Vice President, Academic Affairs (Int.) Student Learning Outcomes Coord.
Student Services			
<i>Decentralized with coordination from District Office</i>	District Office Bakersfield College Cerro Coso Community College Porterville College	Greg Chamberlain Mildred Lovato Jill Board Steve Schultz	Vice Chancellor, Educational Services Vice President, Student Services Vice President, Student Services Vice President, Student Services

Function	Service Provider(s)	Lead(s)	Title
<i>Vocational Programs</i>			
<i>Decentralized with support from District Office</i>	District Office Bakersfield College Cerro Coso Community College Porterville College	Greg Chamberlain Bob Tuttle Valerie Karnes Bill Henry	Vice Chancellor, Educational Services Dean, Eco. Workforce & Devel. (Int.) Dean, Career Technical Education Dean, Career & Tech. Education
<ul style="list-style-type: none"> • VTEA <i>Centralized at District Office in coordination with Colleges</i> 	District Office Bakersfield College Cerro Coso Community College Porterville College	Greg Chamberlain Ed Knudson Valerie Karnes Bill Henry	Vice Chancellor, Educational Services Vice President, Academic Affairs Dean, Career Technical Education Dean, Career & Tech. Education
<i>Workforce/Economic Development</i>			
<i>Decentralized</i>	Bakersfield College Cerro Coso Community College Porterville College	Ed Knudson Valerie Karnes Bill Henry	Vice President, Academic Affairs Dean, Career Technical Education Dean, Career & Tech. Education

This document will be evaluated annually the first two years and every three years thereafter by the members of the Executive Council and the Chancellor's Cabinet.

Summary of Functions

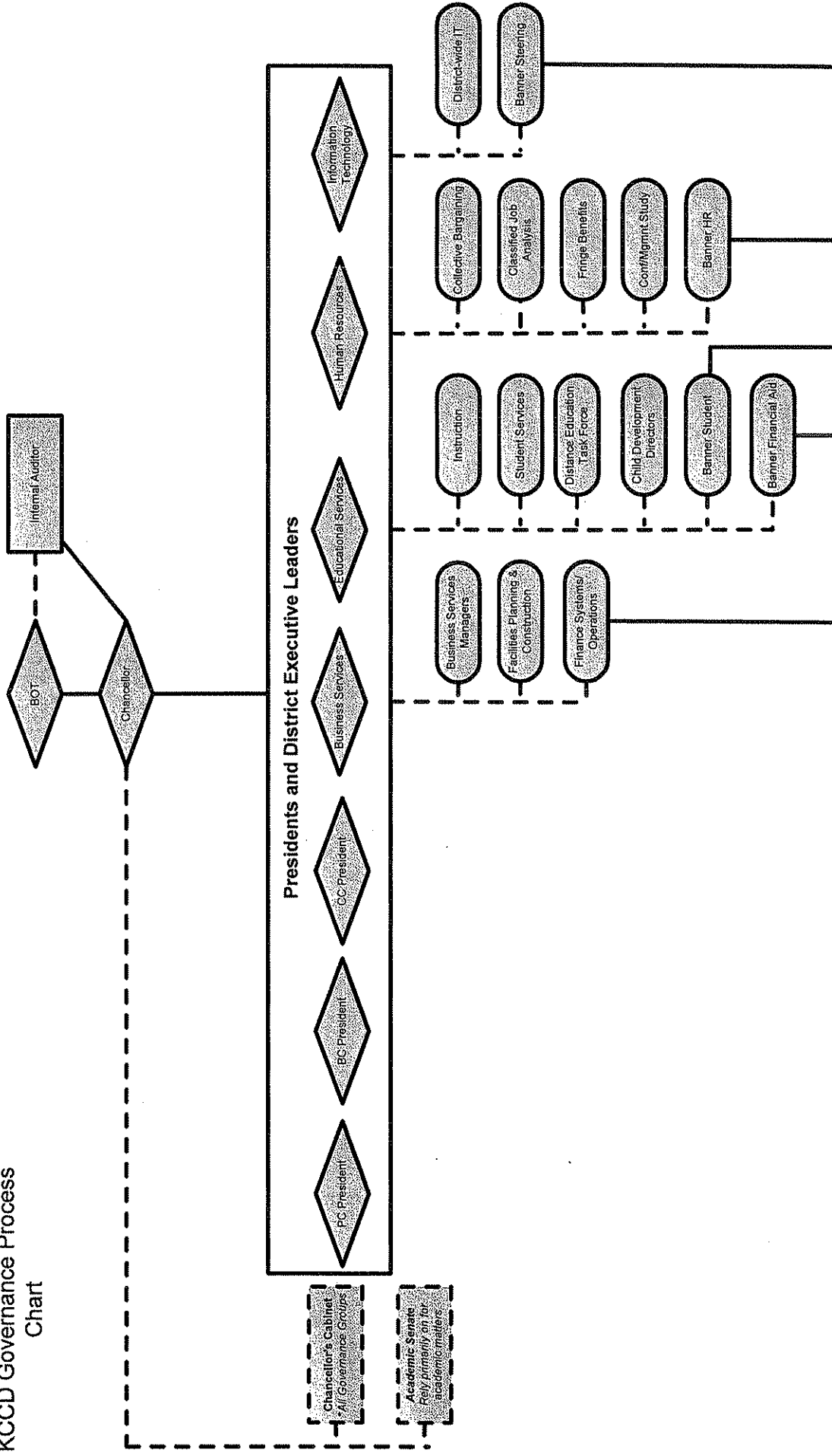
Centralized Functions

Business Services
Accounting
Child Development Services
Facilities Planning and Construction
Human Resources and Payroll
Prioritizing, allocation and placement of staff at appropriate location
Collective Bargaining
Compensation
Information Technology
IT Governance
Technology Services and Applications
Banner and Related Systems
Application Development
Database Administration
Information Access and Reporting
Internet/Email Services
Video Conferencing
Telecommunications
Network Management
Help Desk Services
Risk Management
General Liability
Workers' Compensation, Health and Welfare
Vocational Programs
VTEA

Decentralized Functions

Admissions, Records & Registration
Athletics
Auxiliary Services
Bookstore
Food Services
Student Government
Budget Development
Business Services
Purchasing
Catalog/Schedule Development
DSPS (Disabled Students Program and Services)
EOPS (Extended Opportunities Program and Services)
Finance
Economic Analysis
Cash Flow Analysis
Financial Aid
Foundation
Grant Development
Graphic Design/Duplicating
Information Technology
Technology Development and Planning
Website Services
Online Instruction/Services
Server Management
Back-up and Recovery
Training
Desktop Support
Classroom and Computer Lab Support
Instruction
Curriculum Development
Library/Learning Resources
Library
Tutoring
Media Services/Audio Visual
Maintenance/Operations
Marketing
Program Development and Review
Program Development
Program Review
Research
Student Learning Outcomes
Student Services
Vocational Programs
Workforce/Economic Development

KCCD Governance Process Chart



LEGEND

- * All Participatory Governance Groups include representatives for:
 - SGA (Student Government)
 - CSEA (Classified union)
 - CCA (Faculty union)
 - Academic Senate
 - Administration

This organization/governance chart portrays KCCD's administration's decision-making lines of authority and the governance entities and routes that recommend/advise KCCD decision-making. The primary KCCD participatory governance entity is Chancellor's Cabinet. All other KCCD committees advise Executive Council or KCCD administration on policies, procedures and operational affairs.

Solid Line: Administration line of Authority

Dashed Line: Governance or Operational Recommending/Advising line

