



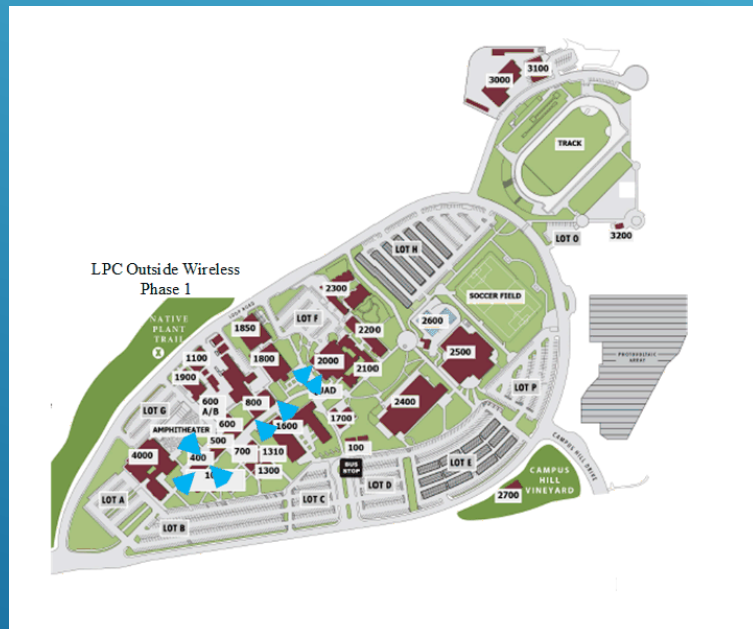
IT BOND PROJECT UPDATE

CHABOT-LAS POSITAS CCD
July 17, 2019

IMPLEMENTATION OF LATEST INDUSTRY STANDARD 802.11AC DATA WIRELESS EQUIPMENT

Recent Activity

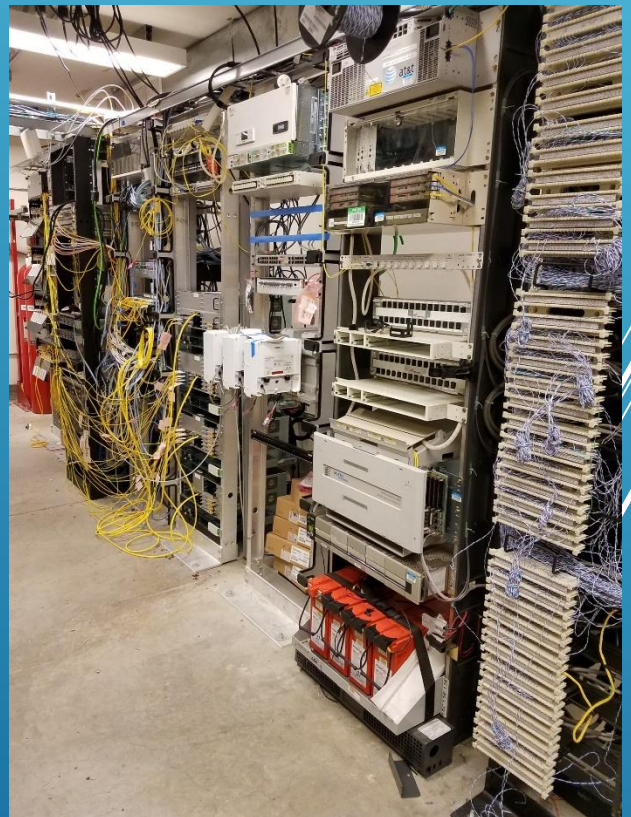
- Exterior wireless augmentation completed at LPC at outside seating areas by Library/Science, B1600/B800, Amphitheatre, B1000/B400, CCA.
- LPC PE fields under investigation.
- Chabot PE fields and other outside congregation areas under review.



DISTRIBUTED ANTENNAE SYSTEM (DAS) FOR IMPROVED CELLULAR COVERAGE INSIDE BUILDINGS

Recent Activity

- IBWave Design for 6 sector design across all carriers is being built in ION-E CANs.
- All TENS online and functional.
- IPOI and GPS switching equipment installed.
- AT&T Transport in place, waiting for service initiation.
- Verizon racks and power ready for MPOE build.
- B1900A enhancements for carrier connectivity complete.
- Fiber reterminations planned in select locations.
- UPSes installed in all available IDFs.



CHABOT NETWORK UPGRADES

Recent Activity

- Buildings completed with new fiber (data) and copper (voice) backbones
- Buildings upgraded to 10G connectivity: 304, 1600, 3900, 2300.
- Replacement continues of 45+ switches across Chabot campus with new Cisco 3650 switches.
- Planning for deployment of 9407 chassis switches underway

CHABOT FIREPOWER DEPLOYMENT

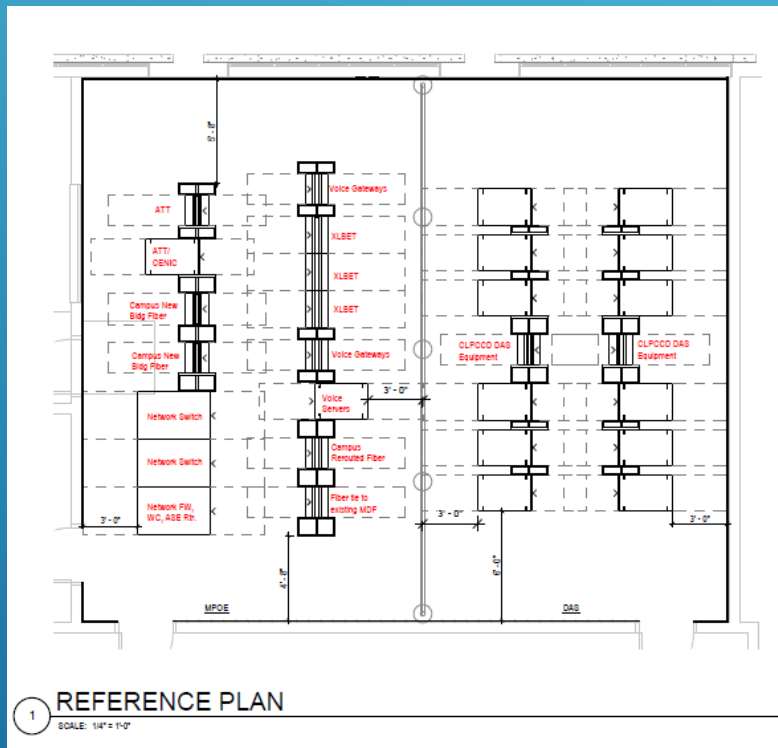
Recent Activity

- Cisco FirePower NetGen firewall rollout to provide a more robust security environment for the network traffic.
- Architecture is being formulated with campus IT input.
- Prototype configuration is planned for summer of 2019.

CHABOT MPOE REPLACEMENT

Recent Activity

- Design review in progress.
- Coordination with AT&T engineering for new campus provisioning has occurred.
- Expect to submit to DSA in Fall of 2019, with construction in 2020.
- After construction, up to a year of work is required to convert voice and data services and add DAS system.



FMO PROJECT SUPPORT

Chabot

- New Bio building walkthroughs
- FA Upgrade fiber installation
- New Library building A&E coordination and user group meetings
- B500 computer labs and small cabling in various buildings.

LPC

- New B2100 Building design meetings
- PSC/AMT design meetings
- FMO trailer add
- B1600, B803 recabling.