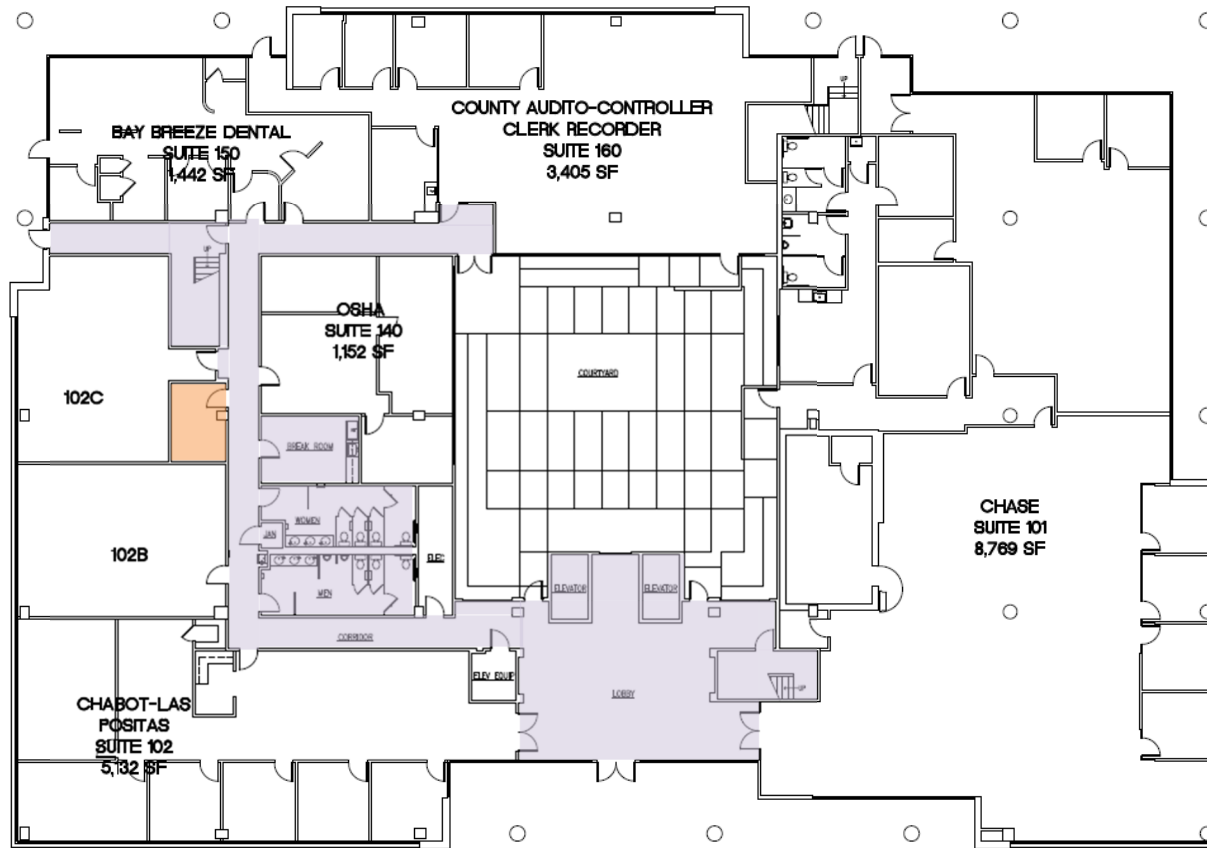
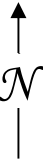


Level 1



FIRST FLOOR PLAN
1/8"=1'-0"



Safe Work Practice Zones

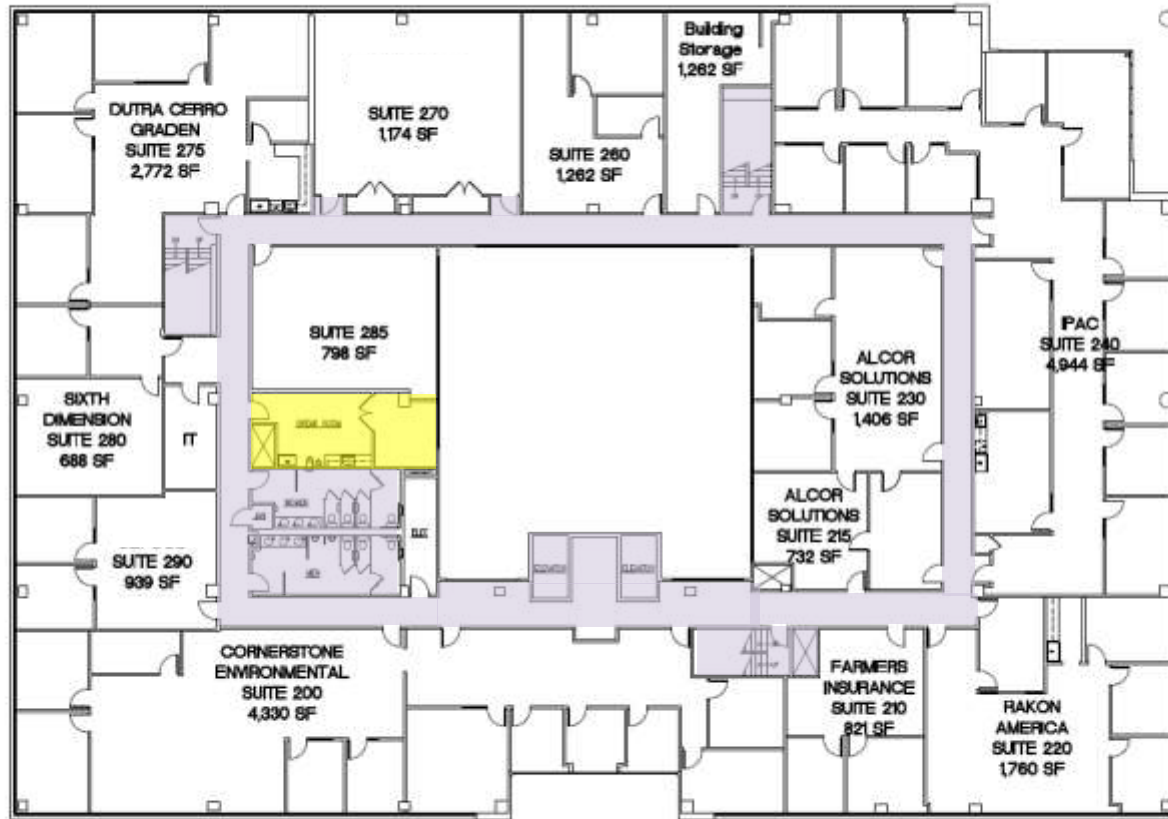
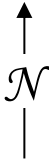
Dublin Center (Chabot/Las Positas)
7600 Dublin Blvd., Dublin, CA 1st Floor
FACS #PJ48098
12/20/2021

LEGEND

Green = staff personal spaces	Light Purple = common areas
Yellow = staff common areas	Dark Purple = public specialized areas
Orange = staff specialized areas	



Level 2



SECOND FLOOR PLAN



Safe Work Practice Zones

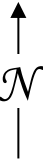
Dublin Campus (Chabot/Las Positas)
 7600 Dublin Blvd., Dublin, CA 2nd floor
 FACS #PJ48098
 5/4/2021

LEGEND

Green = staff personal spaces	Light Purple = common areas
Yellow = staff common areas	Dark Purple = public specialized areas
Orange = staff specialized areas	



Level 3



Safe Work Practice Zones

Dublin Campus (Chabot/Las Positas)
 7600 Dublin Blvd., Dublin, CA
 FACS #PJ48098
 September 22, 2020

LEGEND

Green = staff personal spaces	Light Purple = common areas
Yellow = staff common areas	Dark Purple = public specialized areas
Orange = staff specialized areas	



Room Detail Report (Current)

Chabot-Las Positas Community College District

*Occupancy is based upon DSA IR A -26.cc: Office 100 sf/ occupant; Conference Room 20 sf/occupant; Lecture 20sf/student; Computer Lab 35sf/student

						Room Area	Occupancy Loads
						Total Area (SF)	Max Occupancy Load
Campus	Building	Room #	Room Type	Area	Occupancy	Total Area (SF)	Max Occupancy Load
483 - Chabot-Las Positas CC District Office*	100	DISTRICT OFFICE	302	680 Meeting Room - Conf #1	485	18	
483 - Chabot-Las Positas CC District Office*	100	DISTRICT OFFICE	303	680 Meeting Room - Conf #2	404	16	
483 - Chabot-Las Positas CC District Office*	100	DISTRICT OFFICE	304	310 Office - VC Ed Services - Flei	349	11	
483 - Chabot-Las Positas CC District Office*	100	DISTRICT OFFICE	305	310 Office -Zahra	154	1	
483 - Chabot-Las Positas CC District Office*	100	DISTRICT OFFICE	306	310 Office - Estella	154	1	
483 - Chabot-Las Positas CC District Office*	100	DISTRICT OFFICE	307	310 Office -Donna	154	1	
483 - Chabot-Las Positas CC District Office*	100	DISTRICT OFFICE	308	310 Office - VC Facilities Letcher	357	11	
483 - Chabot-Las Positas CC District Office*	100	DISTRICT OFFICE	315	680 Meeting Room Board Room	2058	94	
483 - Chabot-Las Positas CC District Office*	100	DISTRICT OFFICE	318	680 Meeting Room - Green Room	515	25	
483 - Chabot-Las Positas CC District Office*	100	DISTRICT OFFICE	322	310 Office -Director PRMG	233	5	
483 - Chabot-Las Positas CC District Office*	100	DISTRICT OFFICE	323	680 Meeting Room - PRMG	251	10	
483 - Chabot-Las Positas CC District Office*	100	DISTRICT OFFICE	324	310 Office -Mujeeb	290	6	
483 - Chabot-Las Positas CC District Office*	100	DISTRICT OFFICE	326	310 Office - Chancellor - Patty	352	11	
483 - Chabot-Las Positas CC District Office*	100	DISTRICT OFFICE	328	310 Office - Debra	124	1	
483 - Chabot-Las Positas CC District Office*	100	DISTRICT OFFICE	329	310 Office -Kelly	150	1	
483 - Chabot-Las Positas CC District Office*	100	DISTRICT OFFICE	331	310 Office -Chancellor Gerhard	406	12	
483 - Chabot-Las Positas CC District Office*	100	DISTRICT OFFICE	338	315 Office Service -Storage	157	1	
483 - Chabot-Las Positas CC District Office*	100	DISTRICT OFFICE	343	310 Office -Purchasing	345	7	
483 - Chabot-Las Positas CC District Office*	100	DISTRICT OFFICE	344	310 Office -Chasity	128	1	
483 - Chabot-Las Positas CC District Office*	100	DISTRICT OFFICE	345	310 Office - Janet	124	1	
483 - Chabot-Las Positas CC District Office*	100	DISTRICT OFFICE	346	310 Office - Uma	124	1	
483 - Chabot-Las Positas CC District Office*	100	DISTRICT OFFICE	347	310 Office -CTO Griffin	248	6	
483 - Chabot-Las Positas CC District Office*	100	DISTRICT OFFICE	353	310 Office - Director Business Ser	176	4	
483 - Chabot-Las Positas CC District Office*	100	DISTRICT OFFICE	354	310 Office -Open	153	1	
483 - Chabot-Las Positas CC District Office*	100	DISTRICT OFFICE	355	310 Office - Rosalie	153	1	
483 - Chabot-Las Positas CC District Office*	100	DISTRICT OFFICE	356	310 Office - Dori	153	1	
483 - Chabot-Las Positas CC District Office*	100	DISTRICT OFFICE	357	310 Office - VC Business Service:	357	11	

Room Detail Report (Current)

Chabot-Las Positas Community College District

*Occupancy is based upon DSA IR A -26.cc: Office 100 sf/ occupant; Conference Room 20 sf/occupant; Lecture 20sf/student; Computer Lab 35sf/student

					Room Area	Occupancy Loads
					Total Area (SF)	Max Occupancy Load
Campus	Building	Room #	Room Type			
483 - Chabot-Las Positas CC District Office*	100 DISTRICT OFFICE	358	310 Office -Dawn	150	1	
483 - Chabot-Las Positas CC District Office*	100 DISTRICT OFFICE	361	310 Office - Kathleen	113	1	
483 - Chabot-Las Positas CC District Office*	100 DISTRICT OFFICE	366	310 Office - Kit	164	1	
483 - Chabot-Las Positas CC District Office*	100 DISTRICT OFFICE	367	310 Office -VC Human Resources	323	11	
483 - Chabot-Las Positas CC District Office*	100 DISTRICT OFFICE	368	310 Office - Jennifer	112	1	
483 - Chabot-Las Positas CC District Office*	100 DISTRICT OFFICE	369	310 Office - Kaitlyn	112	1	
483 - Chabot-Las Positas CC District Office*	100 DISTRICT OFFICE	374	310 Office -Team Room	112	1	
483 - Chabot-Las Positas CC District Office*	100 DISTRICT OFFICE	375	310 Office -David	112	1	
483 - Chabot-Las Positas CC District Office*	100 DISTRICT OFFICE	376	310 Office - Megan	112	1	
483 - Chabot-Las Positas CC District Office*	100 DISTRICT OFFICE	387	680 Meeting Room - Hayward	820	17	
					10684	295